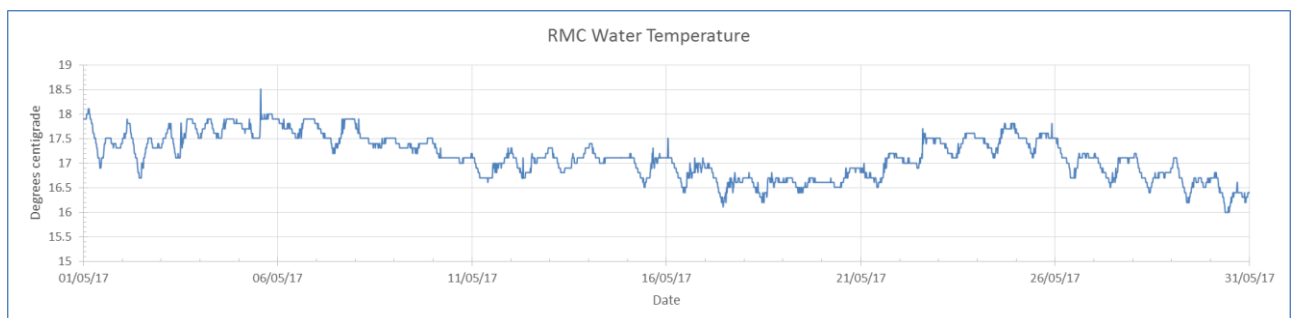
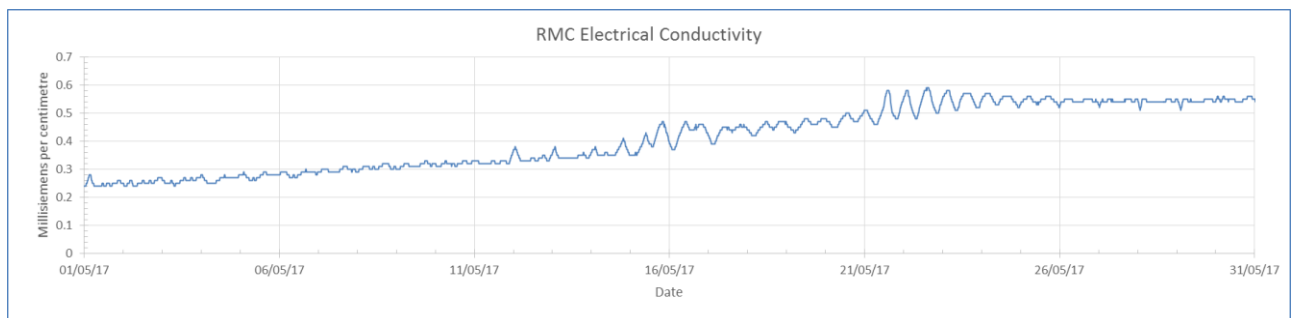
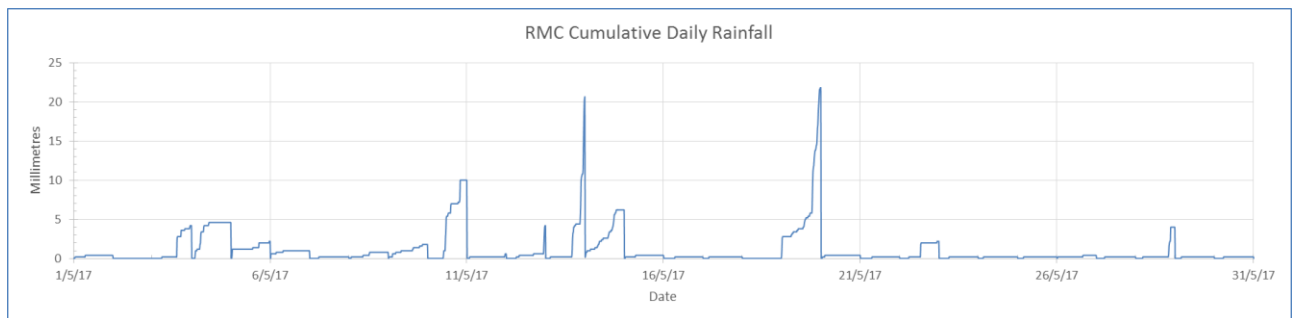
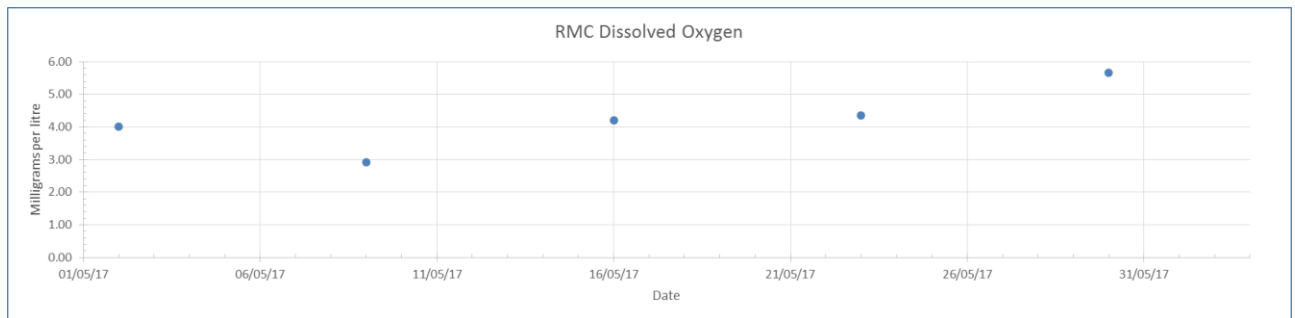


## Rocky Mouth Creek Water Quality – May 2017

Data logger located on upstream side of floodgates



### Interpretation

- pH results from the probe during May at this site were unreliable. Manual sampling of pH during May ranged from 6.2 on 2<sup>nd</sup> May to low readings of 4.9 on 16 May and 4.6 on 23<sup>rd</sup> May, then increasing to 5.5 on 30 May. pH levels below approximately 5.8 become hazardous for aquatic life.
- EC increased steadily at the site throughout May as a result of steadily increasing saline influence.

- DO levels were obtained manually throughout the month and were at marginal levels for aquatic life (between 3 and 6mg/L).