

# LEGEND

## Modelled Flood Levels (mAHD)

0.0 to 0.5
0.5 to 1.0
1.0 to 1.5
1.5 to 2.0
2.0 to 2.5
2.5 to 3.0
3.0 to 3.5
3.5 to 4.0
4.0 to 4.5
4.5 to 5.0
5.0 to 5.5
5.5 to 6.0
6.0 to 6.5
6.5 to 7.0
7.0 to 7.5
7.5 to 8.0
8.0 to 8.5
8.5 to 9.0
9.0 to 9.5
9.5 to 10.0
10.0 to 10.5
10.5 to 11.0
11.0 to 11.5
11.5 to 12.0
12.0 to 12.5
12.5 to 13.0
13.0 to 13.5
13.5 to 14.0
14.0 to 14.5
14.5 to 15.0
15.0 to 15.5
15.5 to 16.0
16.0 to 16.5
16.5 to 17.0
17.0 to 17.5
17.5 to 18.0
18.0 to 18.5
18.5 to 19.0
19.0 to 19.5
19.5 to 20.0
20.0 to 20.5
20.5 to 21.0
21.0 to 21.5
21.5 to 22.0
22.0 to 22.5
22.5 to 23.0
23.0 to 23.5
23.5 to 24.0
24.0 to 24.5
24.5 to 25.0
25.0 to 25.5
25.5 to 26.0
26.0 to 26.5
26.5 to 27.0
27.0 to 27.5
27.5 to 28.0
28.0 to 28.5
28.5 to 29.0
29.0 to 29.5
29.5 to 30.0

## Flood Mapping Extent



## Local Council Boundary



## Cadastral Boundaries



## Contour Line with Label (read looking in downstream direction)

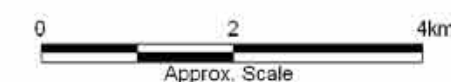


Title:

## 1974 Peak Flood Levels - Sheet 1

Richmond River (Casino to Codrington) and Deep Creek

BMT WBM endeavours to ensure that the information provided in this map is correct at the time of publication. BMT WBM does not warrant, guarantee or make representations regarding the currency and accuracy of information contained in this map.



Map:

5-26

Rev:

C



Filepath : I:\B16784\_I\_BMC\_RichmondMegaModel\DRG\FLD\_043\_100312\_1974 Flood Levels\_RevC.wor