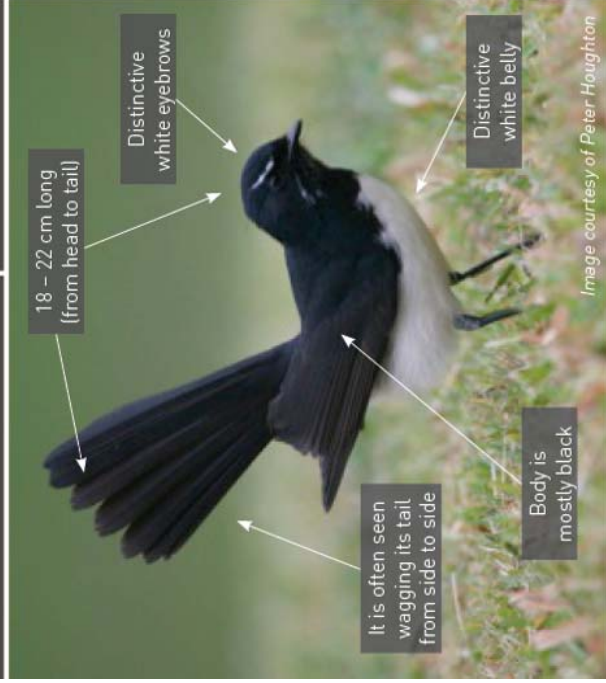


species field guide

Willie Wagtail

Rhipidura leucophrys

When to look:
August to February



ClimateWatch
an initiative of Earthwatch Institute

EARTHWATCH
INSTITUTE

climatewatch.org.au

earthwatch.org.au

species field guide

Australian Water Dragon

Physignathus lesueurii

When to look:
September to April



ClimateWatch
an initiative of Earthwatch Institute

EARTHWATCH
INSTITUTE

climatewatch.org.au

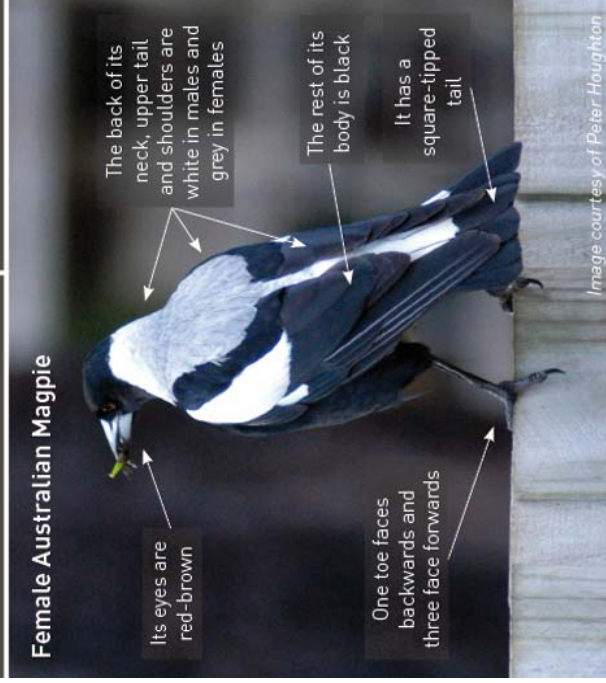
earthwatch.org.au

species field guide

Australian Magpie

Cracticus tibicen

When to look:
June to December



ClimateWatch
an initiative of Earthwatch Institute

EARTHWATCH
INSTITUTE

climatewatch.org.au

earthwatch.org.au

species field guide

Black-faced Cuckoo-shrike

Coracina novaehollandiae

When to look:
August to February



ClimateWatch
an initiative of Earthwatch Institute

EARTHWATCH
INSTITUTE

climatewatch.org.au

earthwatch.org.au

species field guide

Black Swan

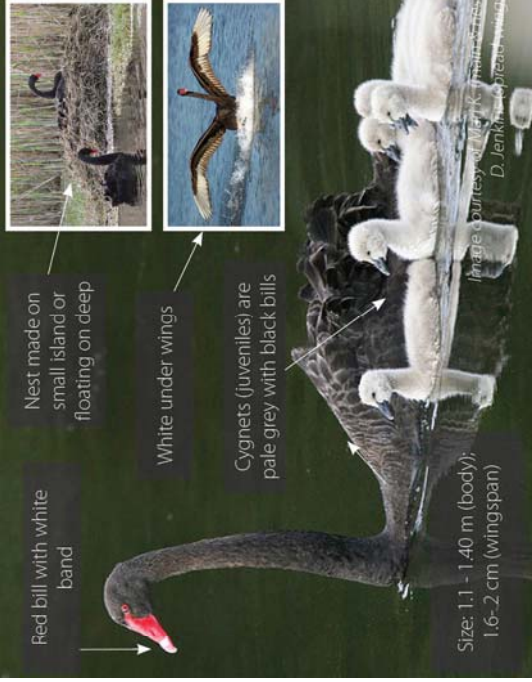
Cygnus atratus

When to look:

Year round; February - September (breeding)

Where to look:

VC, TAS, WA, SA, NSW, ACT, QLD, NT



Red bill with white band

Nest made on small island or floating on deep

White under wings

Cygnets (juveniles) are pale grey with black bills

Size: 1.1 - 1.40 m (body); 1.6-2 cm (wingspan)

Image courtesy of Marj K. and P. Thompson



ClimateWatch
an initiative of Earthwatch Institute



climatewatch.org.au

au.earthwatch.org

species field guide

Dusky Moorhen

Gallinula tenebrosa

When to look:

Year round; August - March (breeding)

Where to look:

Eastern and Southwest Australia



Yellow tipped red bill

Black body, white undertail

Red legs

Size: 35 - 40 cm

Image courtesy of Marj K. (main) and P. Thompson (inset)



ClimateWatch
an initiative of Earthwatch Institute



climatewatch.org.au

au.earthwatch.org

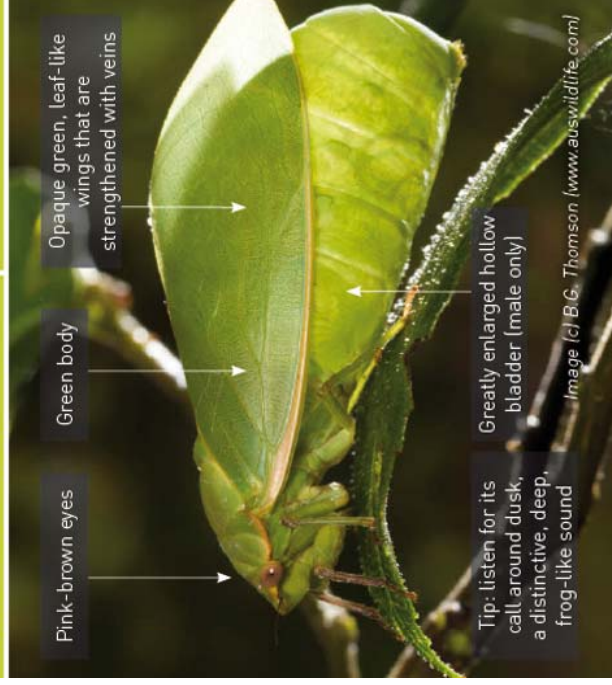
species field guide

Bladder Cicada

Cystosoma saundersii

When to look:

September to May



Pink-brown eyes

Green body

Opaque green, leaf-like wings that are strengthened with veins

Tip: listen for its call around dusk, a distinctive, deep, frog-like sound

Greatly enlarged hollow bladder (male only)

Image [c] B.G. Thomson (www.auswildlife.com)



ClimateWatch
an initiative of Earthwatch Institute



climatewatch.org.au

earthwatch.org.au

species field guide

Eastern Yellow Robin

Eopsaltria australis

When to look:

July to January



Grey back and head

Black bill

Yellow underparts

Image courtesy of David Cook Wildlife Photography



ClimateWatch
an initiative of Earthwatch Institute



climatewatch.org.au

earthwatch.org.au

species field guide

Firewheel Tree

Stenocarpus sinuatus

When to look:
December to June



ClimateWatch
an initiative of Earthwatch Institute

EARTHWATCH
INSTITUTE

climatewatch.org.au

earthwatch.org.au

species field guide

Giant Golden Orb

Nephila pilipes

When to look:
Throughout summer and autumn



ClimateWatch
an initiative of Earthwatch Institute

EARTHWATCH
INSTITUTE

climatewatch.org.au

earthwatch.org.au

species field guide

Garden Skinks

Lampropholis guichenoti
and *L. delicata*

When to look:
September to February



ClimateWatch
an initiative of Earthwatch Institute

EARTHWATCH
INSTITUTE

climatewatch.org.au

earthwatch.org.au

species field guide

Greengrocer or Yellow Monday Cicada

Cyclochila australasiae

When to look:
September to January



ClimateWatch
an initiative of Earthwatch Institute

EARTHWATCH
INSTITUTE

climatewatch.org.au

earthwatch.org.au

species field guide

Grey Fantail

Rhipidura fuliginosa

When to look:
January for nesting
in the south and
autumn to winter for
migration in the north.



White
eyebrow
and throat

Fine white
shafts to all
but central
pair of tail
feathers

Often holds
wings drooped

Grey breast band

Photo by Colin Mulvague

ClimateWatch
an initiative of Earthwatch Institute

EARTHWATCH
INSTITUTE

climatewatch.org.au

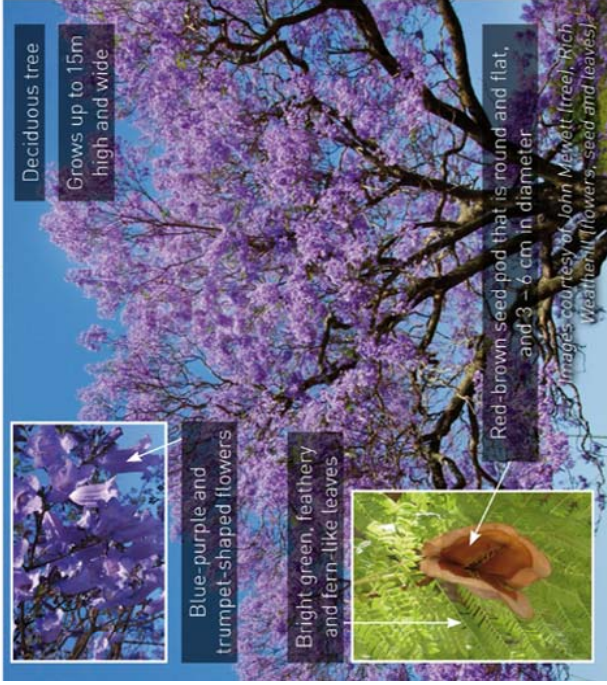
earthwatch.org.au

species field guide

Jacaranda

Jacaranda mimosifolia

When to look:
Throughout the year



Blue-purple and
trumpet-shaped flowers

Bright green, feathery
and fern-like leaves



Red-brown seed pod that is round and flat,
and 3 – 6 cm in diameter

Images courtesy of John Newell (tree), Rich
Weatherill (flowers, seed and leaves)

ClimateWatch
an initiative of Earthwatch Institute

EARTHWATCH
INSTITUTE

climatewatch.org.au

earthwatch.org.au

species field guide

Illawarra Flame Tree

Brachychiton acerifolius

When to look:
Throughout the year



Deciduous tree



Smooth, oval-shaped
leaves with lobes

Bright coral-red,
waxy and bell-
shaped flowers

NOTE: the hairs within the
seed pod can irritate the
skin and are easily inhaled,
so it is not advisable to
handle any open seed pods.

Grows up to 35m high

Dark-brown, leathery
seed pod that is
about 10cm long



Images courtesy of Doug Beckers (tree),
Dan Anderson (leaf, flower, seed pods)

ClimateWatch
an initiative of Earthwatch Institute

EARTHWATCH
INSTITUTE

climatewatch.org.au

earthwatch.org.au

species field guide

Lesser Wanderer

Danaus chrysippus

When to look:
Spring and summer
and after heavy rain
in arid regions



Male:
dark grey sex scales
on its hindwing



Mostly
tawny-orange

Heavy black border
with white spots

7 – 8 cm wingspan

Images courtesy of Geoff Walker

ClimateWatch
an initiative of Earthwatch Institute

EARTHWATCH
INSTITUTE

climatewatch.org.au

earthwatch.org.au

species field guide

Plumbago or Zebra Blue Butterfly

When to look:
January to June (Sydney region). Throughout the year (northern Qld)



Two eye-spots on its hindwing

Male:
Brown with a blue-purple sheen, except on the edges of its wings

Mottled brown and white underneath

Female:
Brown with patches of white

Blue-purple sheen on the inner part of its wings

Images courtesy of Geoff Walker

species field guide

Silky Oak

Grevillea robusta

When to look:
September to January



Evergreen tree

Silvery green and fern-like leaves that are 10 – 34cm long

Grows 8 – 40m high

Golden yellow to orange flowers

Smooth, oval seed pod that turns dark brown when mature

Images courtesy of Tatiana Gerus (flower), Jim Harding (seed pods)

species field guide

Ribwort Plantain

Plantago lanceolata

When to look:
September to May



Tussock-like, rosette plant

Flowers form a tight, cylindrical cluster which is 1 – 7 cm long

Grows up to 30 cm high (tussock), with the flower stalk up to 1 m high

Small and initially cream flowers, that turn brown rapidly

Leaves form a clump and usually stand upright

Long, sword-shaped leaves

Image courtesy of Rick Weatherill

species field guide

Southern Brown or Ewing's Tree Frog

Litoria ewingi

When to look:
Throughout the year but particularly late winter/early spring and autumn



Pale fawn, cream, orange to light brown, or partly to completely green body

Narrow black or brown stripe from its snout, through its eye, to its shoulder

Wide brown band from between its eyes to down its back

Tip: listen for its call, a series of rapid, harsh whirring, pulsing notes ("creeeeee cree cree" repeated 5 – 15 times)

Half webbed toes

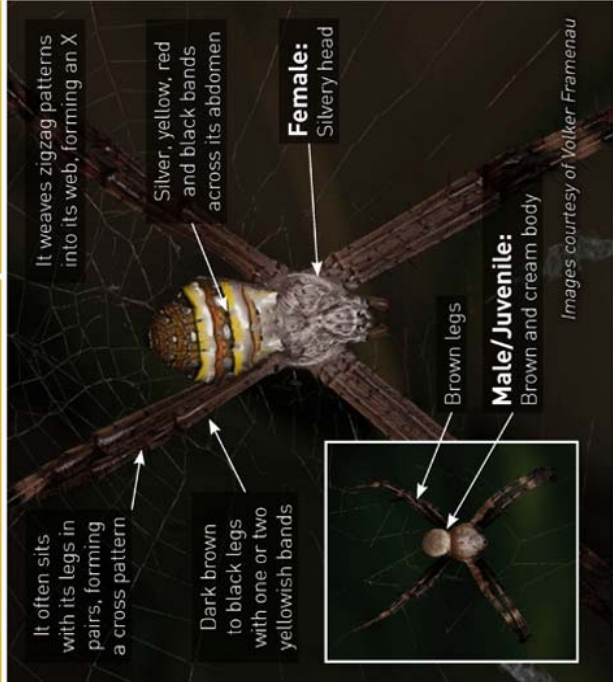
No webbing on its fingers

Image courtesy of Nuytsia@tas on Flickr

species field guide

St Andrew's Cross Spider
Argiope keyserlingii

When to look:
Summer and autumn



ClimateWatch
an initiative of Earthwatch Institute

Earthwatch Institute
earthwatch.org.au

species field guide

White bellied or white breasted sea eagle
Haliaeetus leucogaster

Where to look

- Usually found along coast lines, lakes, rivers and drains
- Coastal Australia



ClimateWatch
an initiative of Earthwatch Institute

Earthwatch Institute
earthwatch.org.au

species field guide

Striped Marsh Frog
Limnodynastes peronii

When to look:
August to April



ClimateWatch
an initiative of Earthwatch Institute

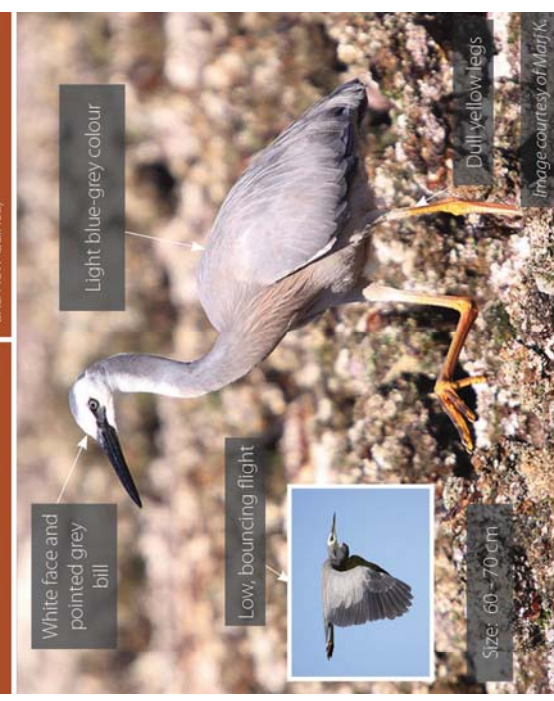
Earthwatch Institute
earthwatch.org.au

species field guide

White-faced Heron
Egretta novaehollandiae

When to look:
Year round, October - December (breeding)

Where to look:
VIC, NSW, QLD, TAS, WA, SA, NT and internationally (New Zealand, Indonesia, and New Guinea)



ClimateWatch
an initiative of Earthwatch Institute

Earthwatch Institute
earthwatch.org.au

species field guide

Peron's Tree Frog *Litoria peroni*

When to look:
September to January



Image © B.G. Thomson (www.auswildlife.com)

ClimateWatch
an initiative of Earthwatch Institute

EARTHWATCH
INSTITUTE

climatewatch.org.au

earthwatch.org.au

species field guide

Orchard Swallowtail Butterfly *Papilio aegeus*

When to look:
October to May



Images courtesy of Geoff Walker

ClimateWatch
an initiative of Earthwatch Institute

EARTHWATCH
INSTITUTE

climatewatch.org.au

earthwatch.org.au

species field guide

Lewin's Honeyeater *Meliphaga lewinii*

When to look:
August to March

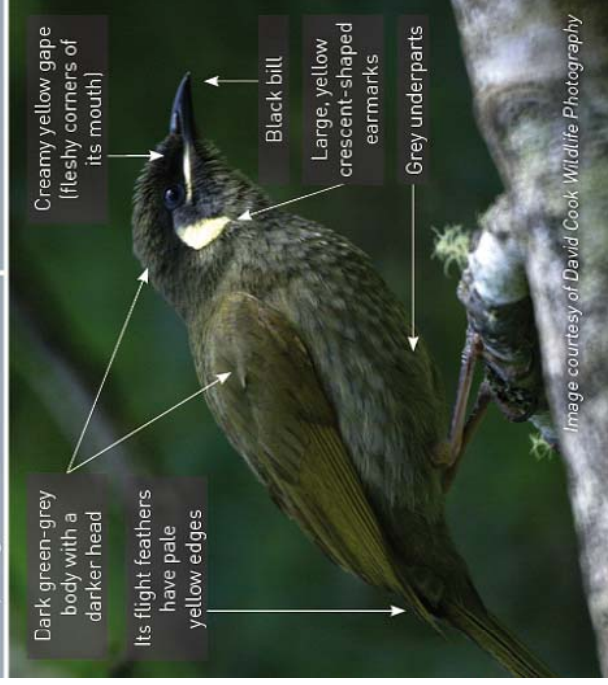


Image courtesy of David Cook Wildlife Photography

ClimateWatch
an initiative of Earthwatch Institute

EARTHWATCH
INSTITUTE

climatewatch.org.au

earthwatch.org.au