



WELCOME TO THE WATER WALK

LOOK, LISTEN AND LEARN...

This walk is one of a series of 'Water Walks' developed by Rous County Council, our regional water authority.

Here at Emigrant Creek Dam, there are two walks. The Water Walk introduces you to some basic facts about water on your way to view the dam.

In just 200 metres, you will discover new things about:

- the natural water cycle
- water management
- our water supply
- how catchments work
- how water is treated
- the catchment of Emigrant Creek Dam
- what you can do to care for water and country.

You can learn about these things by reading the signs, but more detailed information is contained in this booklet of 'info sheets'. Every sign has an 'info sheet' that goes with it, so when you get to each sign, just look it up in the booklet.

At the end of each fact sheet, there is a set of exercises that you can do.

They are exercises for your:



head (thinking)



heart (feeling)



hands (doing)

Try doing at least one exercise at the end of each topic. They're fun! Some adults may think that these exercises are too simple for them, but the exercises are designed to give important learning experiences for everyone.

If you're walking with someone else, you might like to take turns speaking your answers to each other. The head exercises are good to write down.

Learning with our head, heart and hands makes sure we *really* understand.



This Water Walk will take you from the carpark, up the gently sloping hill, to a lookout from where you can see the dam, and where Emigrant Creek begins downstream of the dam. Along the way are several 'stops' where you can sit down, look around and think about the different topics. The Boodgeragah Walk takes you to Killen Falls.



Learning with our head, heart & hands makes sure we really understand.



**Prepare yourself for an interesting journey.
Open your eyes, your hearts and your minds!**



This walk has been constructed by Rous County Council on a piece of land that was very degraded due to major reconstruction works on the Emigrant Creek Dam spillway during 2002. You will be walking through vibrantly growing young trees. These are known as "early successional species" which means the first stage in regeneration of the rainforest that once would have grown throughout the Emigrant Creek valley.

Boodgeraga Walk

When you've come back down the Water Walk, you can head off on a second walk of about 500 metres. The Boodgeraga Walk takes you through more regenerating rainforest, along Emigrant Creek to Killen Falls. This is a very special place and has one of the remaining stands of intact Big Scrub rainforest in this area.

Boodgeraga is the Wi-abul word for fig-tree and, on this walk, you will find an ancient figtree guarding the base of the falls. On your way to the falls, you will see the health of the creek downstream from the dam. If exploring around the waterfall area, be careful because the cave provides valuable habitat to several species of bats, including some threatened species so please be quiet.

enjoy the walk...

TRY THIS!

Learn with your...



"Where has your journey already taken you today? Think about how you got here. Begin where you started your day at your home, school, motel, camp ground or wherever. What different types of country did you drive through to get here? What did you see?"



"How are you feeling right now as you are about to begin this new journey of the Water Walk?"



"Look around you and count how many human-made structures you can see. Write them down and what they're used for (if you're really keen!)"

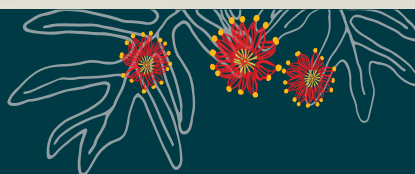
Learning objective: To get people focused on the fact that they are beginning a journey, and on their present location.



For further information contact:

Rous County Council

02 6623 3800 www.rous.nsw.gov.au



These information sheets were originally prepared for Rous County Council by Sustainable Futures Australia in liaison with Widjabul elders. © Rous County Council and Sustainable Futures Australia 2007. This is an educational project for the protection of water land, and for reconciliation.

All information provided is done so in good faith, but on the basis that Rous County Council and its consultants are not liable for any damage or loss that may occur in relation to this information.

