

RIPARIAN MANAGEMENT

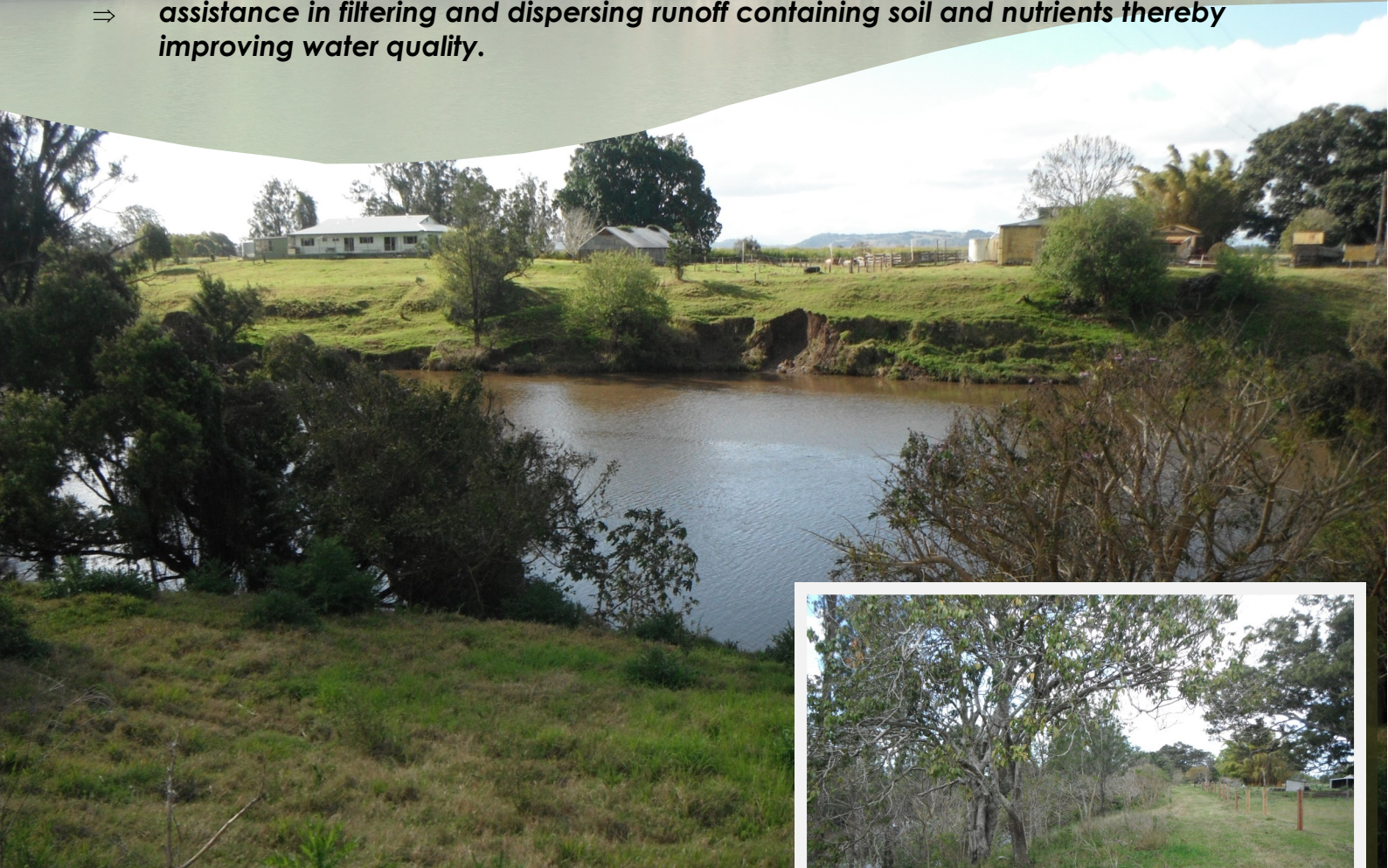
What is riparian land?

Riparian land is any land that adjoins or directly influences a body of water. It includes land immediately alongside creeks and rivers including the banks. Gullies that sometimes run with water, areas surrounding lakes, wetlands and floodplains are also considered to be riparian land.

Why is riparian land important?

Riparian land with intact vegetation is vitally important to the health of a waterway because it provides:

- ⇒ organic matter to a river – a major food source for aquatic fauna;
- ⇒ a supply of woody debris within the river, which forms key habitat areas for many fish and invertebrates;
- ⇒ a source of shade in upland areas which influences water temperature and light penetration producing suitable conditions for aquatic flora and fauna;
- ⇒ assistance in bank stabilisation, reducing erosion in many areas; and
- ⇒ assistance in filtering and dispersing runoff containing soil and nutrients thereby improving water quality.



Riparian areas are places where land adjoins rivers and streams. They support a wide range of plants and animals that contribute to water quality in the Richmond River.



Best Management Practice for Riparian Management

Checklist	Yes	No	Solution
Are riparian areas on the property bare of vegetation?	✓		Select locations that are suitable for planting. Refer to "Revegetating Streams in the Richmond Catchment" for local native species list. Find a nearby remnant, or contact Landcare for advice on plant species and supply, also possible funding for your project.
Does the area require fencing to protect the banks from stock?	✓		Make a plan for fencing and providing an off stream watering system for stock. Work can be carried out in stages with priority given to highly eroded areas, areas of planting or repair, and areas of existing native riparian vegetation.
Is there information on plants suitable for the site and where can they be purchased?	✓		Contact Landcare for advice on the supply of local native plants. Also refer to "Revegetating Streams in the Richmond Catchment" for local native species list.
Are there methods for planting in riparian areas?	✓		Planting can be difficult in riparian areas due to the potential of flood. Stakes, tree guards, erosion control matting can assist. It is also vital to position plants on the bank where they occur naturally as some species are more resilient to inundation. Try long-stem plant stock.

For advice on funding options:

Richmond Landcare inc.

P: 0266 191 582 **E:** info@richmondlandcare.org

Northern Landcare Support Services

P: 02 6632 3722 **E:** info@nlss.com.au

Where to find help.

Your local Contacts:

Richmond River County Council

Floodplain Project Officer

P: 0266 218 314 **E:** floodplain@rrcc.nsw.gov.au

Lismore City Council

Environmental Strategies Team

P: 1300 878 387

Office of Environment and Heritage

Coast and Estuaries Officer

P: 0266 270 200

North Coast Local Land Services

P: 1300 795 299 **E:** admin.northcoast@lls.nsw.gov.au

For advice on weed management:

Far North Coast Weeds

P: 0266 233 833 **E:** fncw@fncw.nsw.gov.au

Further reading:

"Stock and Waterways—a managers guide"

lwa.gov.au/files/products/river-landscapes/pr061132/pr061132.pdf

"Longstem planting guide"

<http://www.environment.nsw.gov.au/resources/grants/longstemguide.pdf>

Note: The information and best practice approaches provided in the enclosed publications are current, however some of the contact details may have changed.

For further information refer to the contact list provided